

Service Data

**Vickers®**

# Vane Pumps

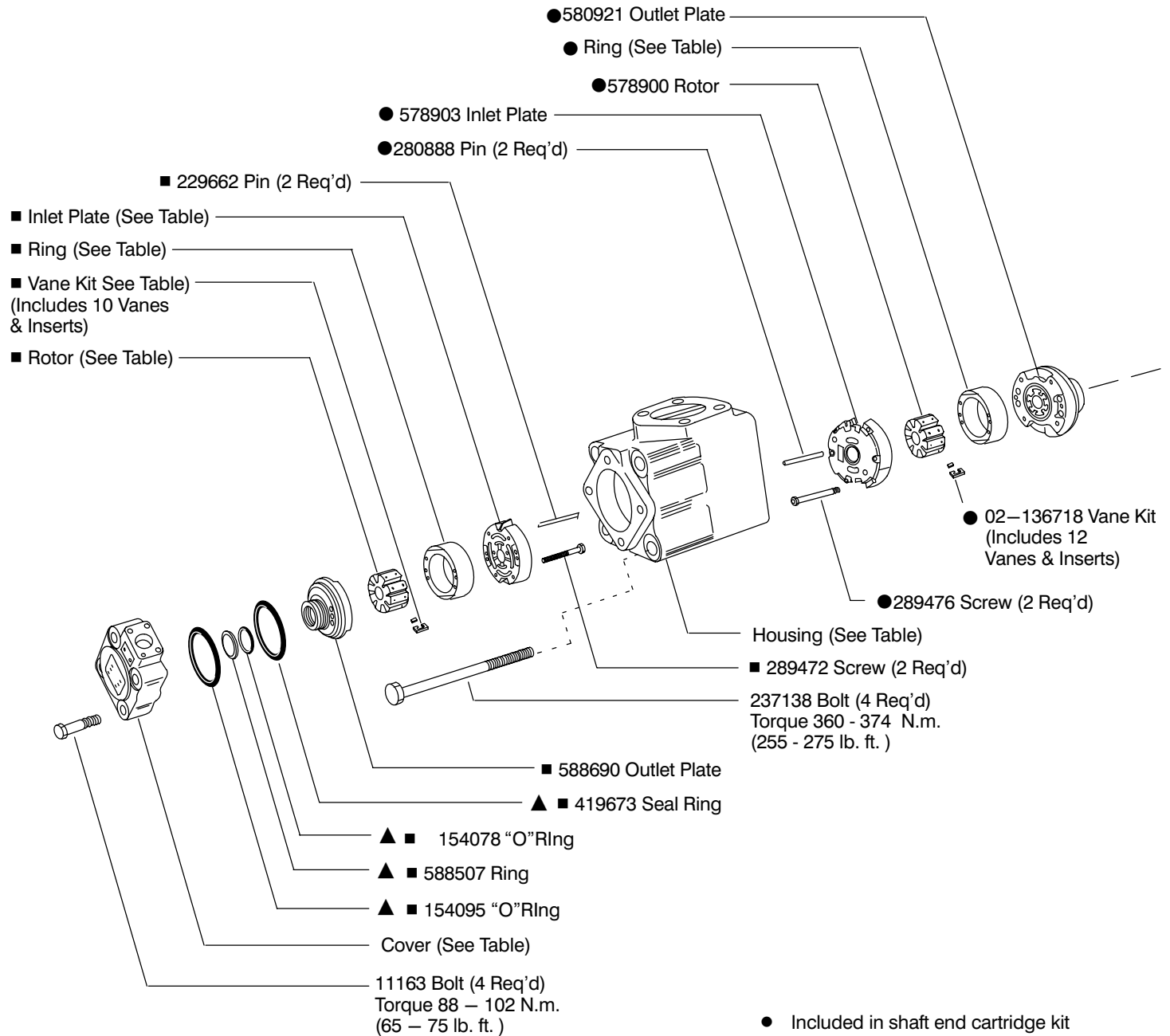
---



## Vane Type Double Pump

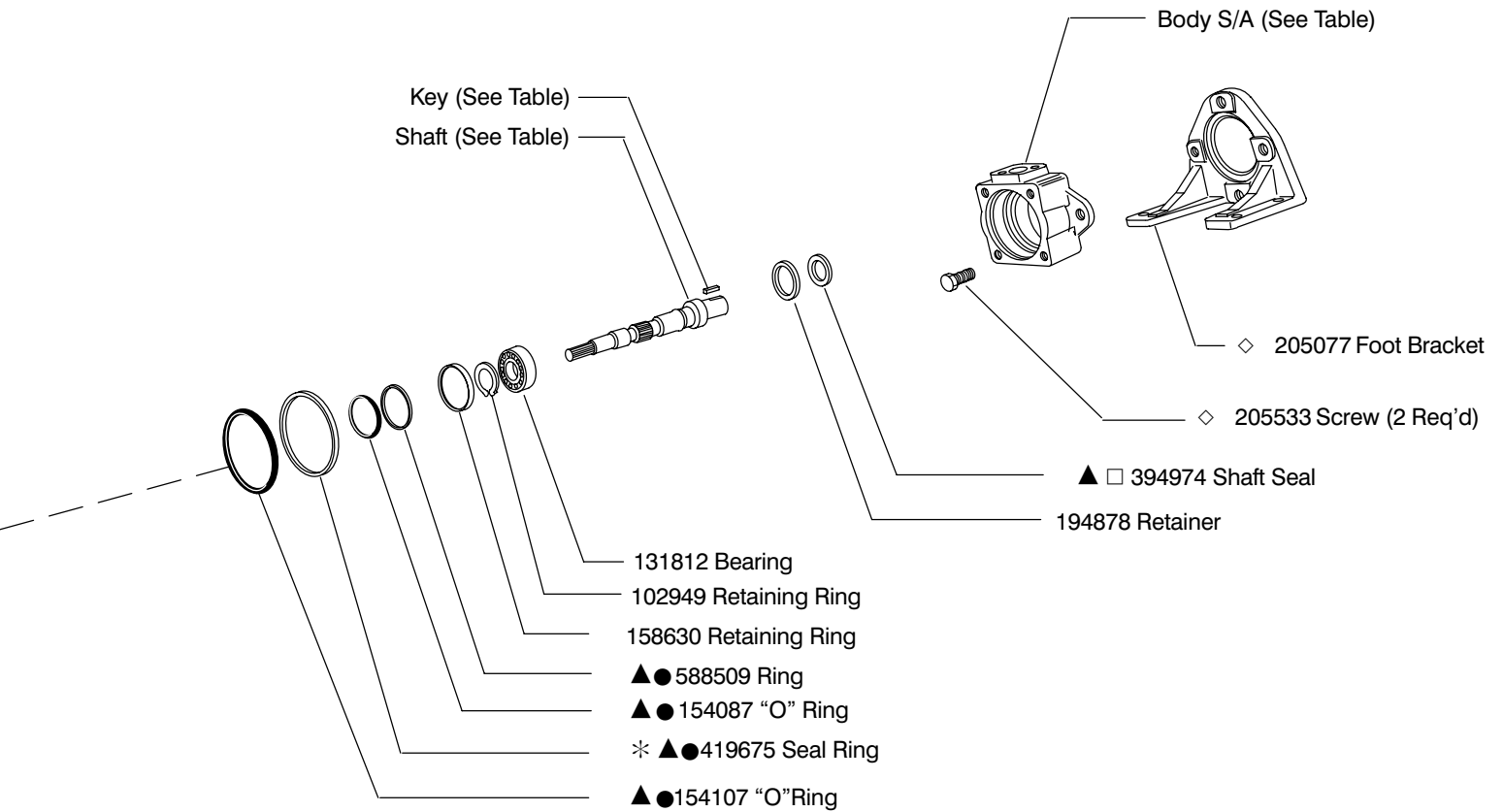
(F3)–4525V(M)–\*\*A(M)\*\*(F)–\*\*–22–\*

Model	■ Rotor	■ Vane kit	■ Ring	■ Inlet Plate	Cover End ■ Cart. Kit	Cover End ■ F3 Cart. Kit
4525V***12	584618	02-136719	584610	588689	02-102536	02-102544
4525V***14			584612		02-102537	02-102545
4525V***17			584614		02-102538	02-102546
4525V***21			584616		02-102539	02-102547



- Included in shaft end cartridge kit
- Included in cover end cartridge kit
- ▲ Included in seal kit 922865  
F3 equivalent seal kit 919345
- ◇ Included in foot bracket kit FB-C-10
- Assemble seal with spring loaded sealing member towards bearing. Seals to be completely wetted with oil prior to assembly.
- \* Install 419675 sealing ring into body, then install cartridge kit.

MODEL	● RING	Shaft End ● CART KIT	Shaft End ● F3 CART KIT
	4525V42	581679	02-102572
4525V50	581680	02-102574	02-102577
4525V60	578904	02-102575	02-102578

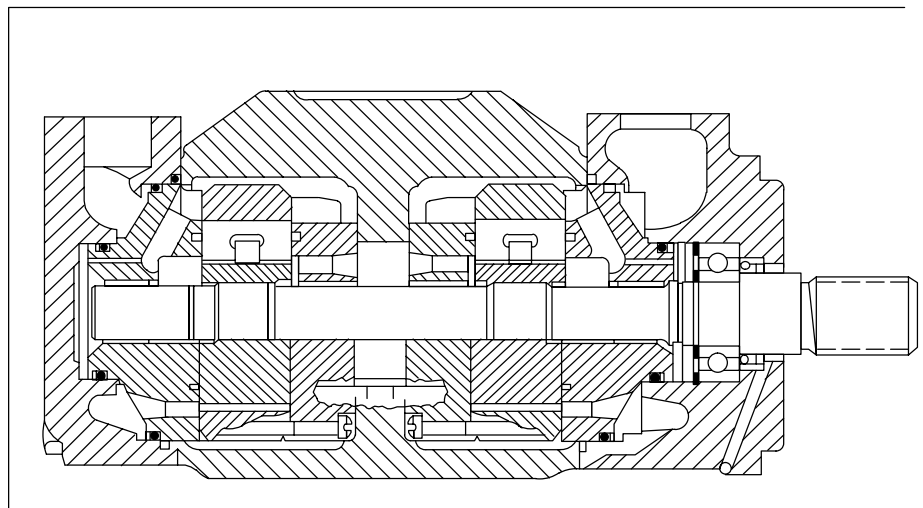


MODEL	COVER	HOUSING	BODY S/A
4525V**A	231532	370071	942356
4525V**E	242250		942356
4525VM**A	231532	875778	02-136925
4525VM**AM	478511		02-136926

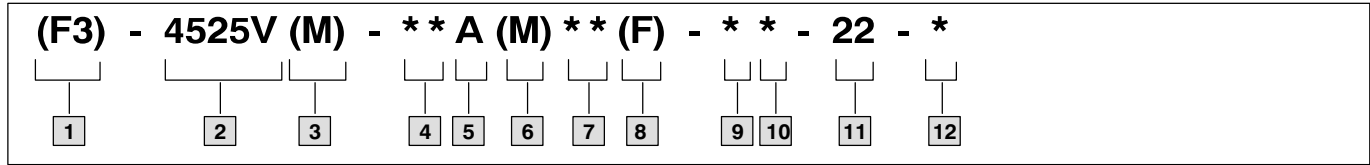
SHAFT	TYPE	KEY
233524	(1) keyed	217596
233527	(11) splined	—
361762	(86) keyed	239751
850614	(192N) keyed	472303

**NOTE**

For satisfactory service life of these components in industrial applications, use full flow filtration to provide fluid which meets ISO cleanliness code 16/13 or cleaner. OFP, OFR, and OFRS series filters are recommended.



# Model Code



## 1 Special seals

## 2 Series designation

Displacements  $\text{cm}^3/\text{r}$  ( $\text{in}^3/\text{r}$ )

Model	Shaft end	Cover end
4525V	138 – 193 (8.41 – 11.75)	40 – 67 (2.47 – 4.13)

## 3 Pilot designation

**M** – Metric per ISO 3019/2 100A2HW  
**Omit** – Standard pilot

## 4 Geometric displacement

Shaft end pump

(Rated capacity (USgpm) at 1200 rpm, 6.9 bar (100 psi))

Frame size	Code	$\text{cm}^3/\text{r}$	$\text{in}^3/\text{r}$
4525V	42	138	8.41
	50	162	9.85
	60	193	11.75

## 5 Port connections

**A** – SAE 4 bolt flange

## 6 Port connection modifier

**M** – Metric port connection (4 bolt flange)  
**Omit** – Inch thread port connection (4 bolt flange)

## 7 Geometric displacement

Cover end pump

(Rated capacity (USgpm) at 1200 rpm, 6.9 bar (100 psi))

Frame size	Code	$\text{cm}^3/\text{r}$	$\text{in}^3/\text{r}$
4525V	12	40	2.47
	14	45	2.78
	17	55	3.39
	21	67	4.13

## 8 Mounting

**F** – Foot mounting  
**Omit** – Flange mounting

## 9 Shaft

1 – Straight keyed  
11 – Splined  
86 – Heavy duty straight keyed  
192N – Straight keyed (M pilot only)

## 10 Port orientation

(Viewed from cover end of pump)

With no. 1 outlet opposite inlet

**AA** – No. 2 outlet 135° CCW from inlet  
**AB** – No. 2 outlet 45° CCW from inlet  
**AC** – No. 2 outlet 45° CW from inlet  
**AD** – No. 2 outlet 135° CW from inlet

With no. 1 outlet 90° CCW from inlet

**BA** – No. 2 outlet 135° CCW from inlet  
**BB** – No. 2 outlet 45° CCW from inlet  
**BC** – No. 2 outlet 45° CW from inlet  
**BD** – No. 2 outlet 135° CW from inlet

With no. 1 outlet inline with inlet

**CA** – No. 2 outlet 135° CCW from inlet  
**CB** – No. 2 outlet 45° CCW from inlet  
**CC** – No. 2 outlet 45° CW from inlet  
**CD** – No. 2 outlet 135° CW from inlet

With no. 1 outlet 90° CW from inlet

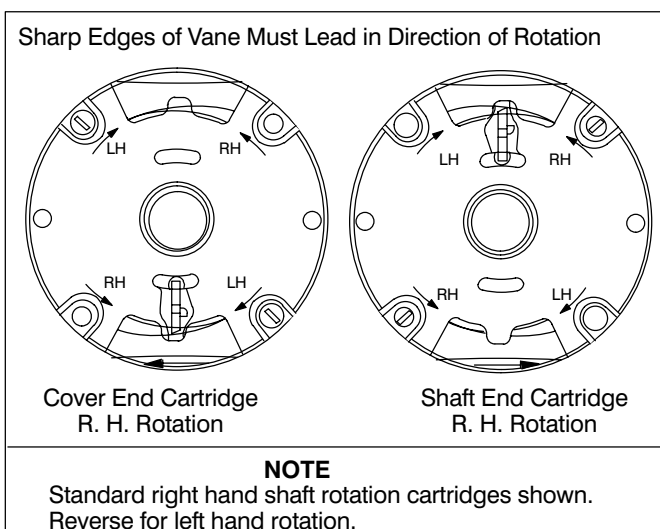
**DA** – No. 2 outlet 135° CCW from inlet  
**DB** – No. 2 outlet 45° CCW from inlet  
**DC** – No. 2 outlet 45° CW from inlet  
**DD** – No. 2 outlet 135° CW from inlet

## 11 Design

## 12 Rotation

(Viewed from shaft end of pump)

**L** – Left hand for counterclockwise  
**R** – Right hand for clockwise



## NOTE

To reverse cartridge kit rotation, remove the two screws and reverse the location of the inlet support plate and the outlet support plate. Reinstall the two screws hand tight. Use pump cover to align all sections of the cartridge. Carefully remove the cover and tighten the screws.

## NOTE

When ordering spare cartridge parts, it is recommended they be obtained in cartridge kits. Kits are assembled and tested for either right or left hand rotation. If left hand rotation is required, it should be specified on parts order by adding suffix "L" to cartridge kit number.